



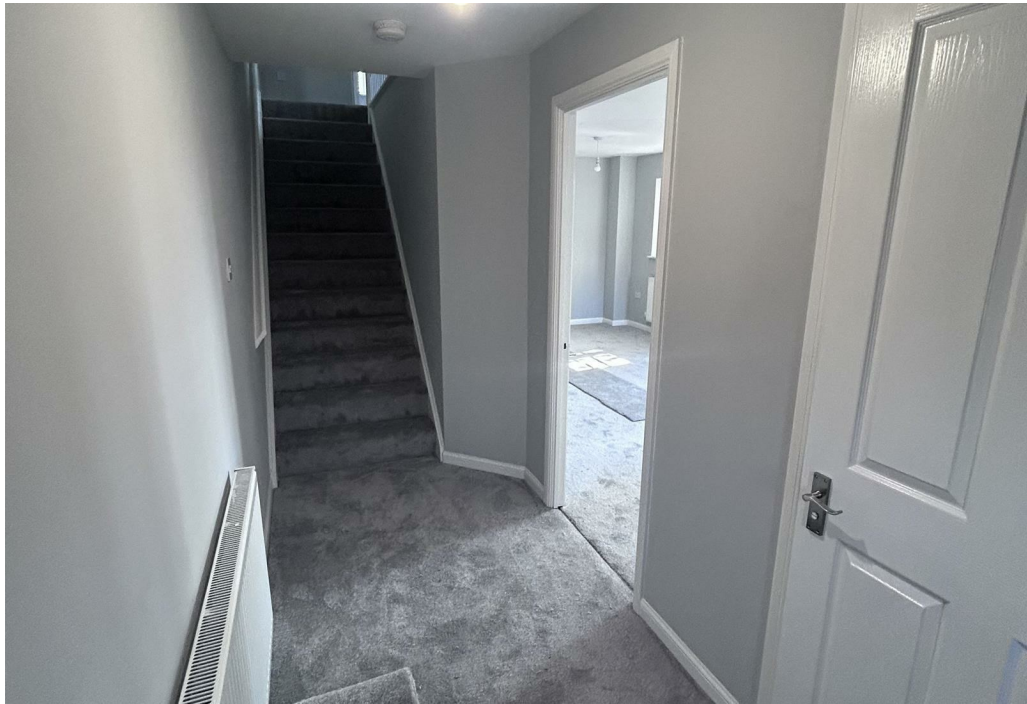
Cheshire Close, London, E17 4LZ

House - End Terrace | 3 Bedrooms

£595,000 Freehold

**LARKHAM
PIKE** &

www.larkhamandpike.co.uk



Entrance

Driveway and path leading to front.

Entrance Hall

Accessed via a composite front door with stairs leading to first floor, radiator and doors to:

Cloakroom

Vanity wash hand basin with drawers under, monobloc mixer tap and splash back tiling. Low level WC, heated towel radiator and high level consumer board. Double glazed window to front.

Living Room

19'9" x 11'9"
Dual aspect with two double glazed windows to side and double glazed window to front. Two radiators and large walk-in under stairs cupboard with shelving. Opening into:

Kitchen/Dining Room

15'6" x 12'1"
Comprising a range of wall and base mounted units finished with white high gloss fronts with work surfaces over and inset single bowl single drainer sink unit with mixer tap over and splash back tiling. Integrated oven with four ring gas hob and filter hood over. Space for dishwasher, washing machine and fridge/freezer. Radiator and double glazed windows and door opening onto patio.

Landing

Access to loft, linen cupboard with shelving and doors to:

Bathroom

Refitted suite with P-shaped shower/bath with taps and mixer shower over with two outlets. Inset wash hand basin with monobloc mixer tap and cupboard under. Low level WC and heated towel rail. Grey

flecked tiled walls and frosted double glazed window to side.

Bedroom One

15'6" x 10'4"
Overstairs storage cupboard. Two double glazed windows to front and radiator.

Bedroom Two

12'2" x 8'0"
Double glazed window to rear and radiator.

Bedroom Three

9'0" x 7'2"
Double glazed window to rear and radiator.

Exterior

Rear Garden

L-shaped with gardens to side and rear. Paved patio area with remainder lawn with inset flower beds. Gated access to front, cold water tap and exterior lighting.

Front

Laid to lawn with path to front. Driveway with parking for two vehicles.

Tenure

Freehold

Viewing

Contact Larkham & Pike on 01707 260707

